

Painting a Fuller Picture

The Da Vinci Project and Prior Auth

Presenters



Xavier Sevcik

Referrals & Authorizations
Software Developer



Evan Hendrich

Referrals & Authorizations
Software Developer

Learning Objectives

1

**Understand the
current state of
prior authorization**

2

**Learn how FHIR
APIs can reduce
the burden**

3

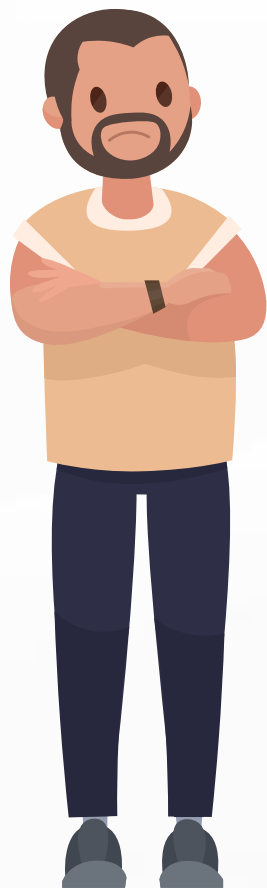
**Explore the
technical details
for integration
with Epic**

Prior Auth Current State

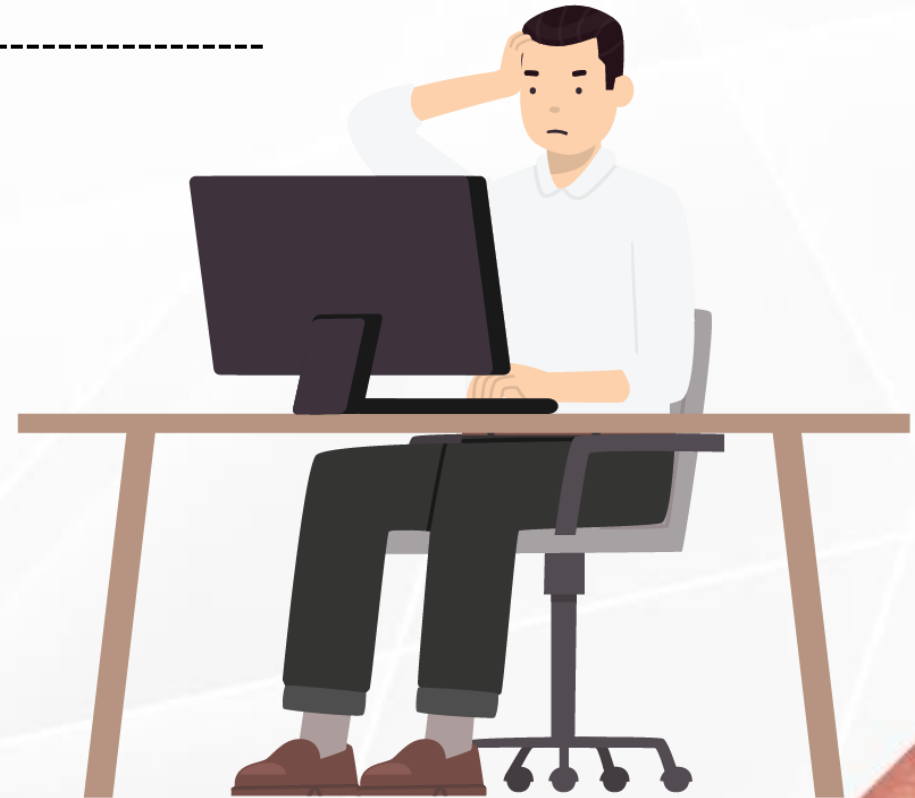
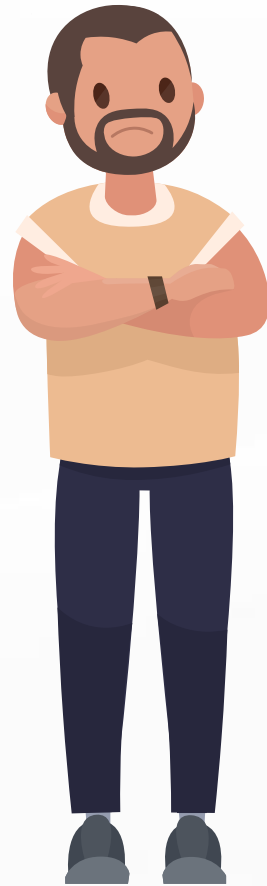
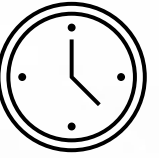
Post-Op Check-In



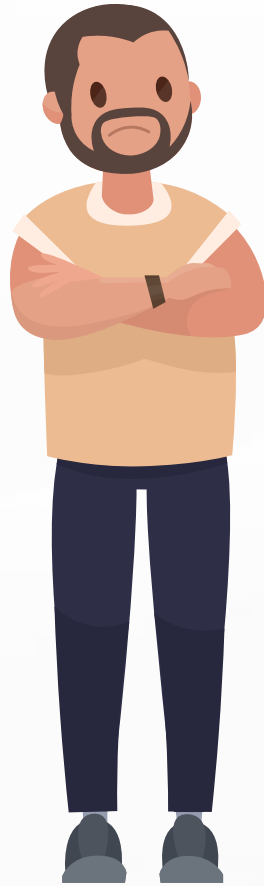
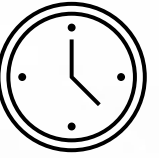
Claim Denial



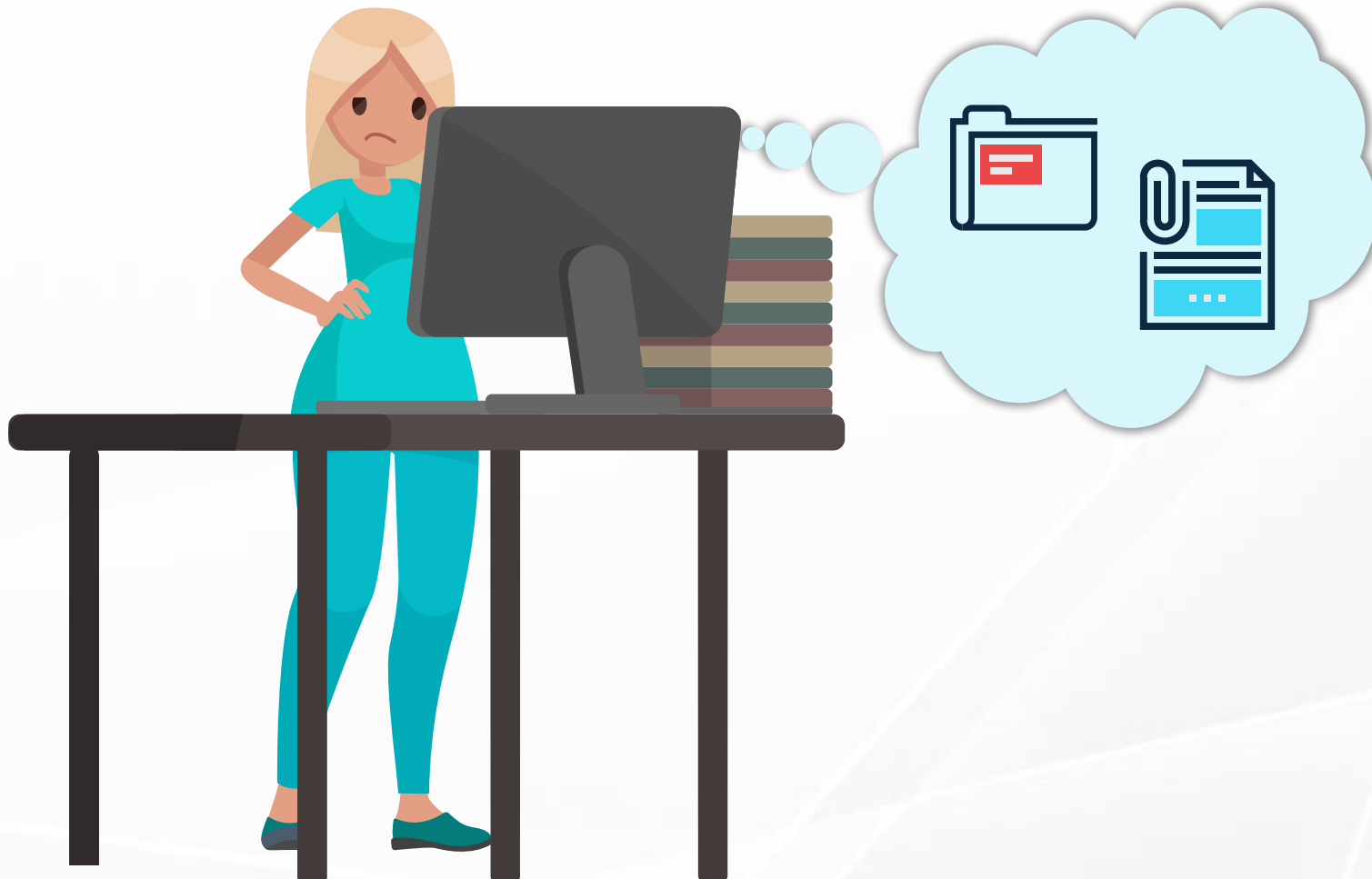
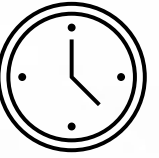
Contact Health Plan



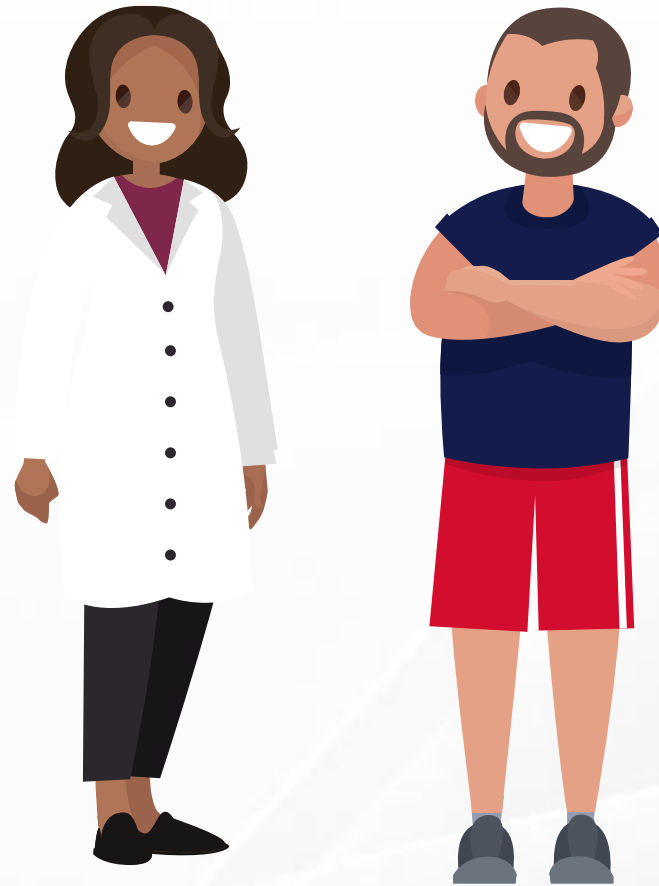
Contact Provider



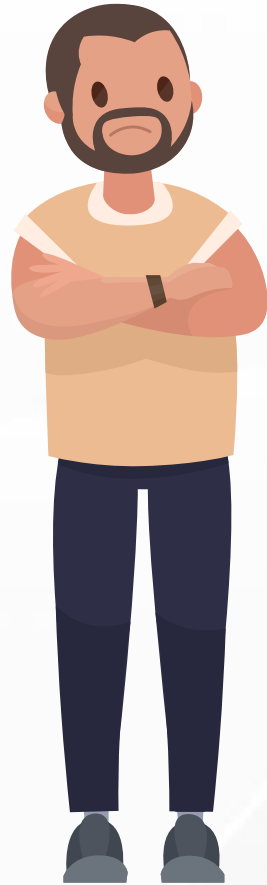
File Appeal



Claim Appealed



In Summary: Burdensome



In the News

Feb 2025

As prior authorization burden grows, so does momentum for change



July 2025

Most consumers find prior authorization is a major problem



Jan 2024

New regulations that require use of FHIR-based electronic prior auth APIs in 2027



August 2025

New Certification requirements EHRs to support FHIR-based electronic prior auth APIs



FHIR API Crash Course

Burden Reduction APIs



Coverage Requirements Discovery

Allows a provider to contact a payer early in the care process to determine the requirements for obtaining authorization.



Documentation Templates and Rules

Allows a payer to request structured information from the provider in the form of a questionnaire.



Prior Authorization Support

FHIR-based messaging format designed to improve upon X12 transactions while maintaining compatibility.

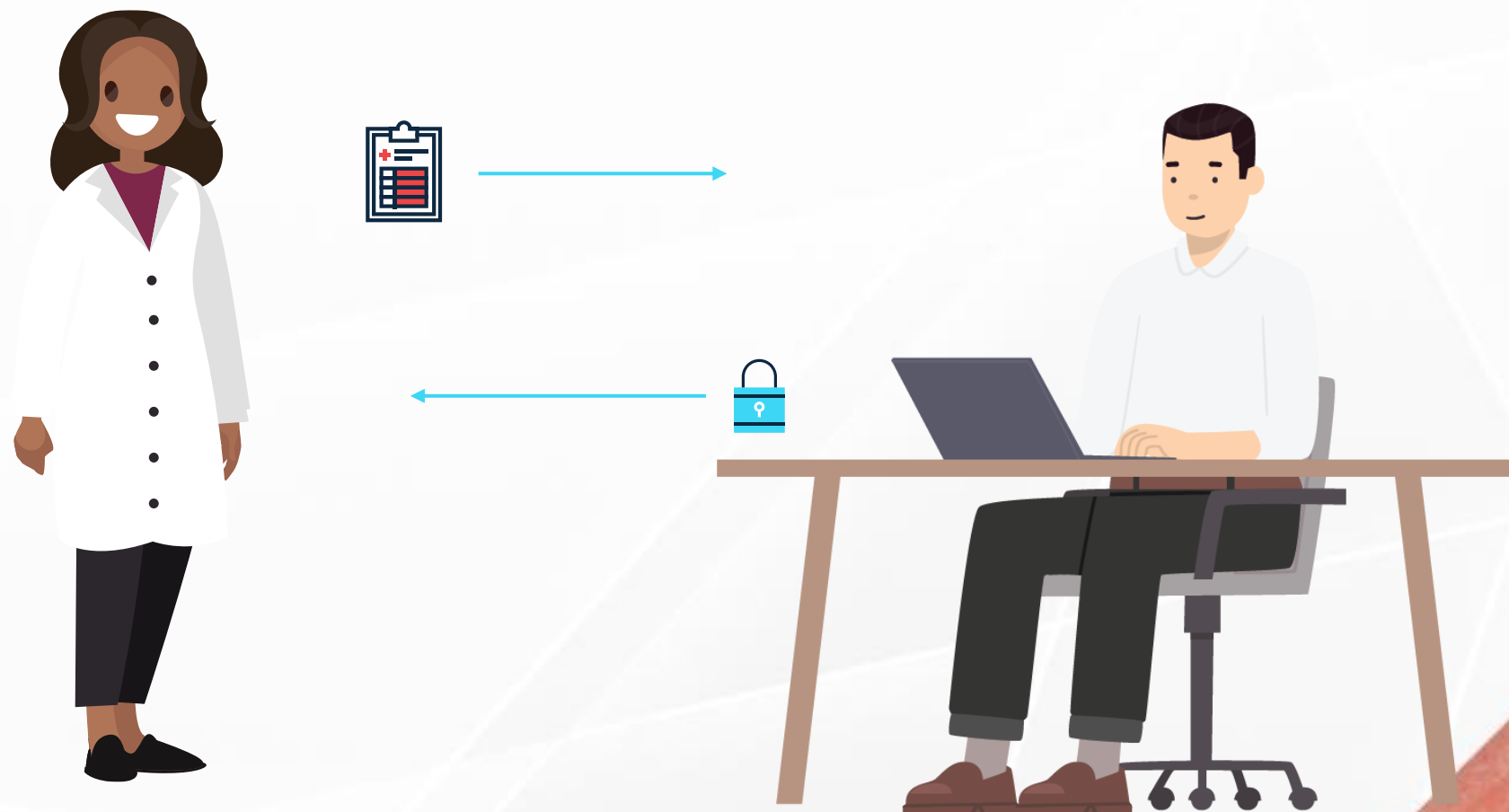
An Ideal Patient Journey

Using the Burden Reduction Guides

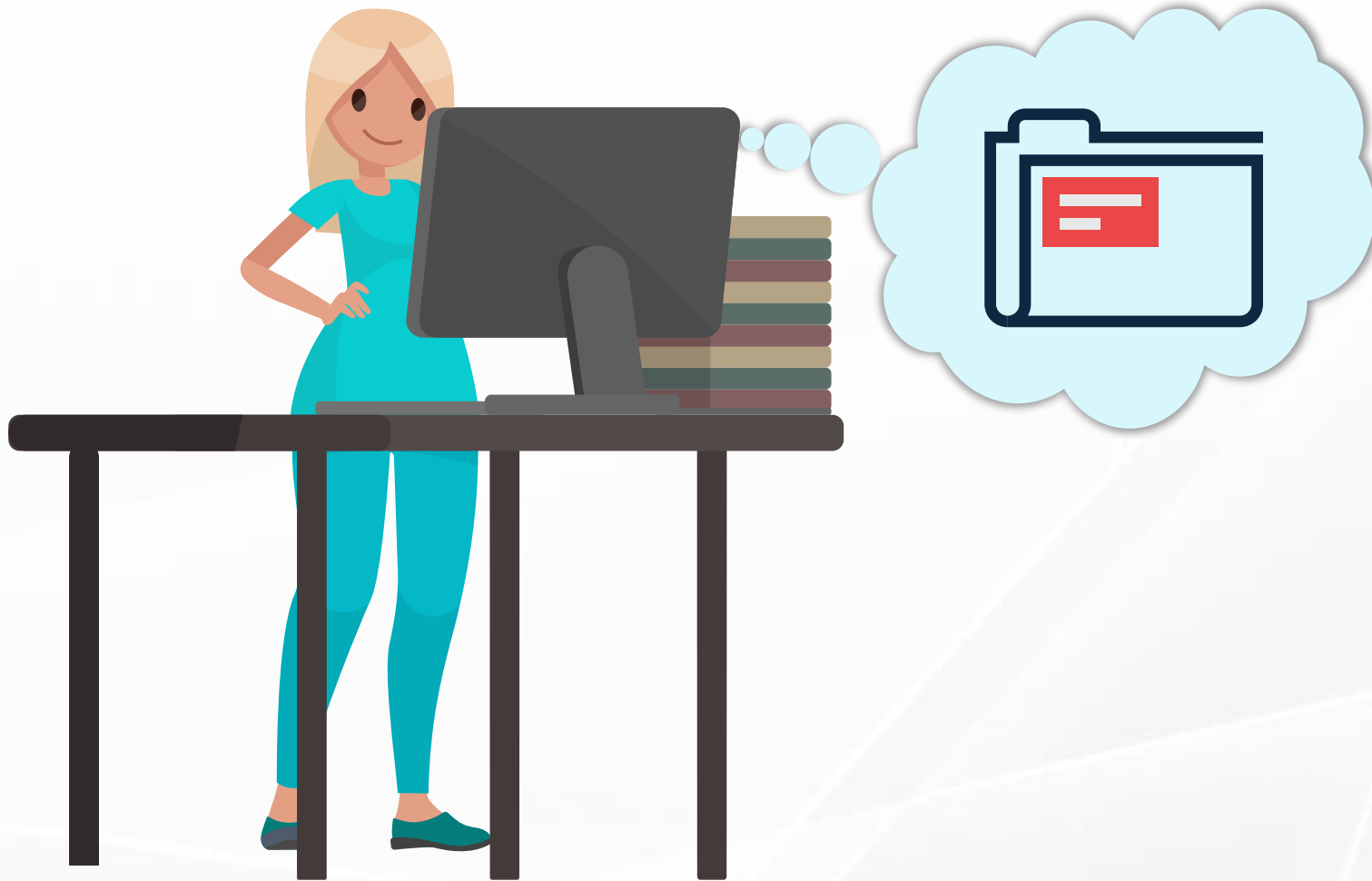
Let's Try Again



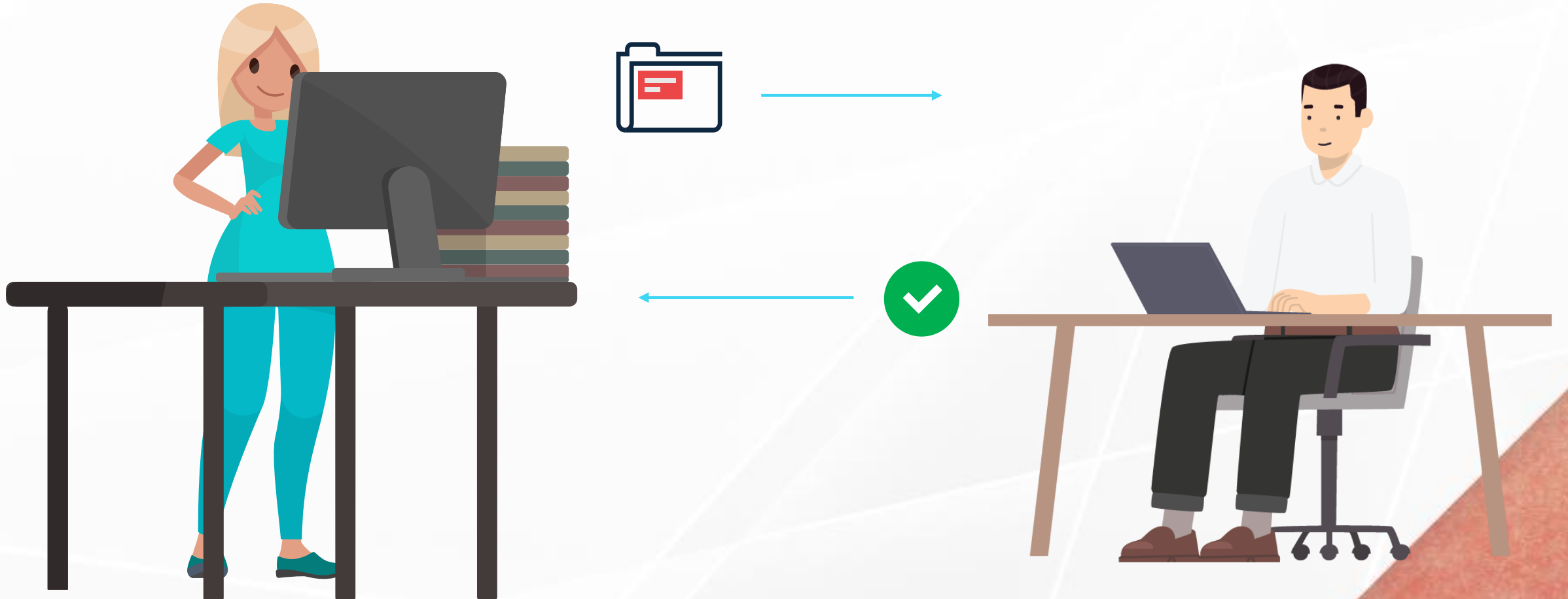
CRD At Order-Sign



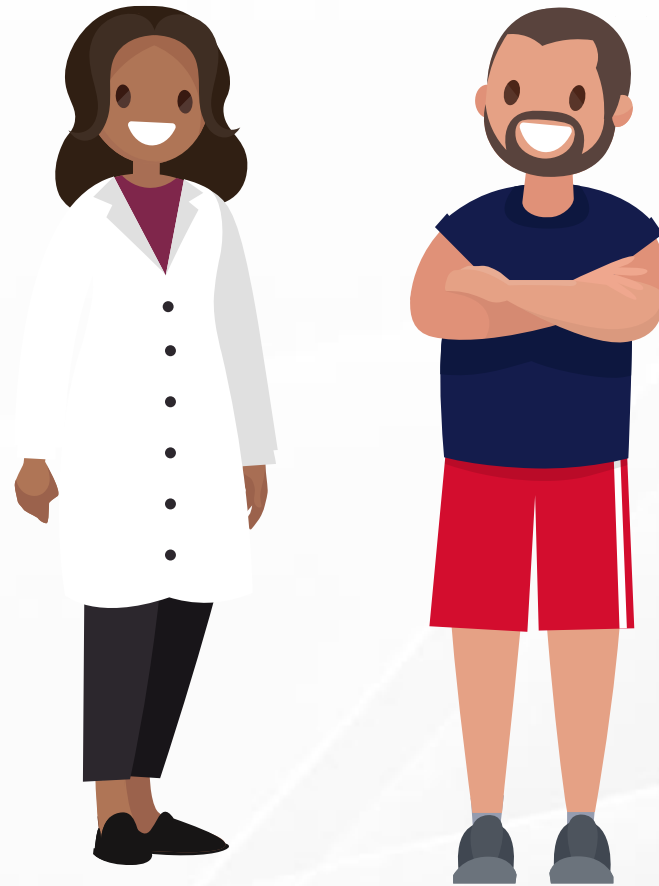
DTR For Auth User



PAS Submission



Successful Prior Auth

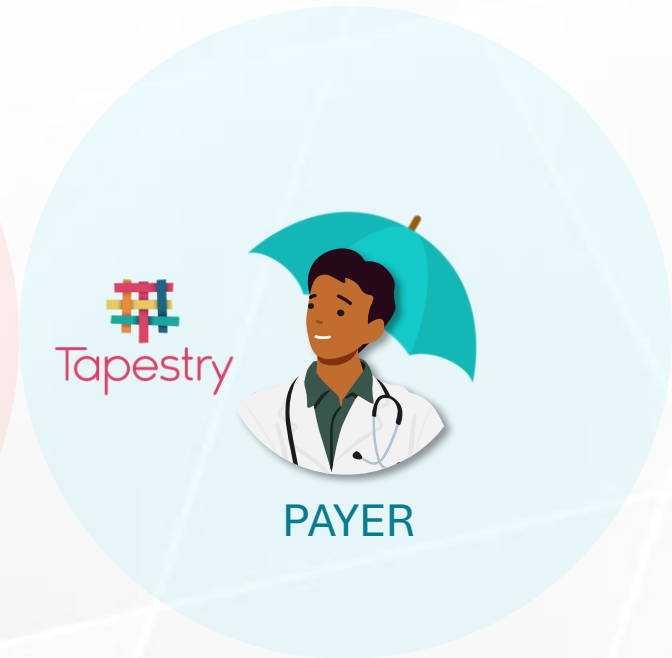
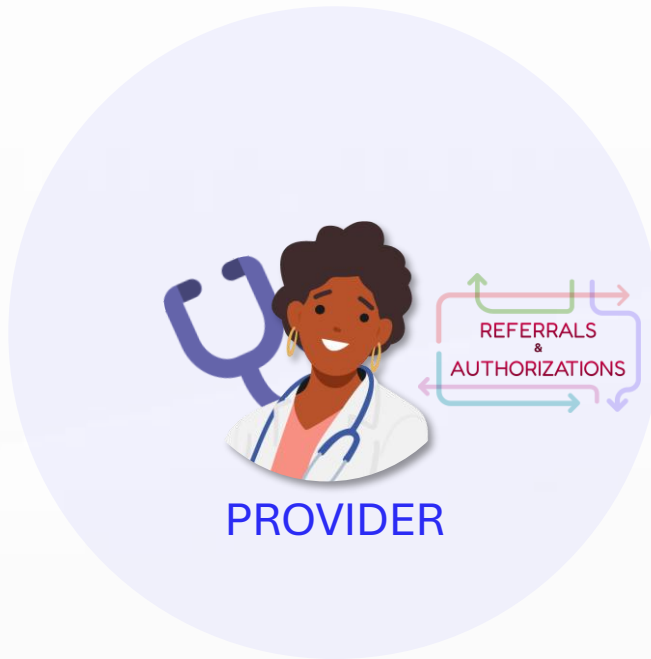


Epic Timelines and Nuances

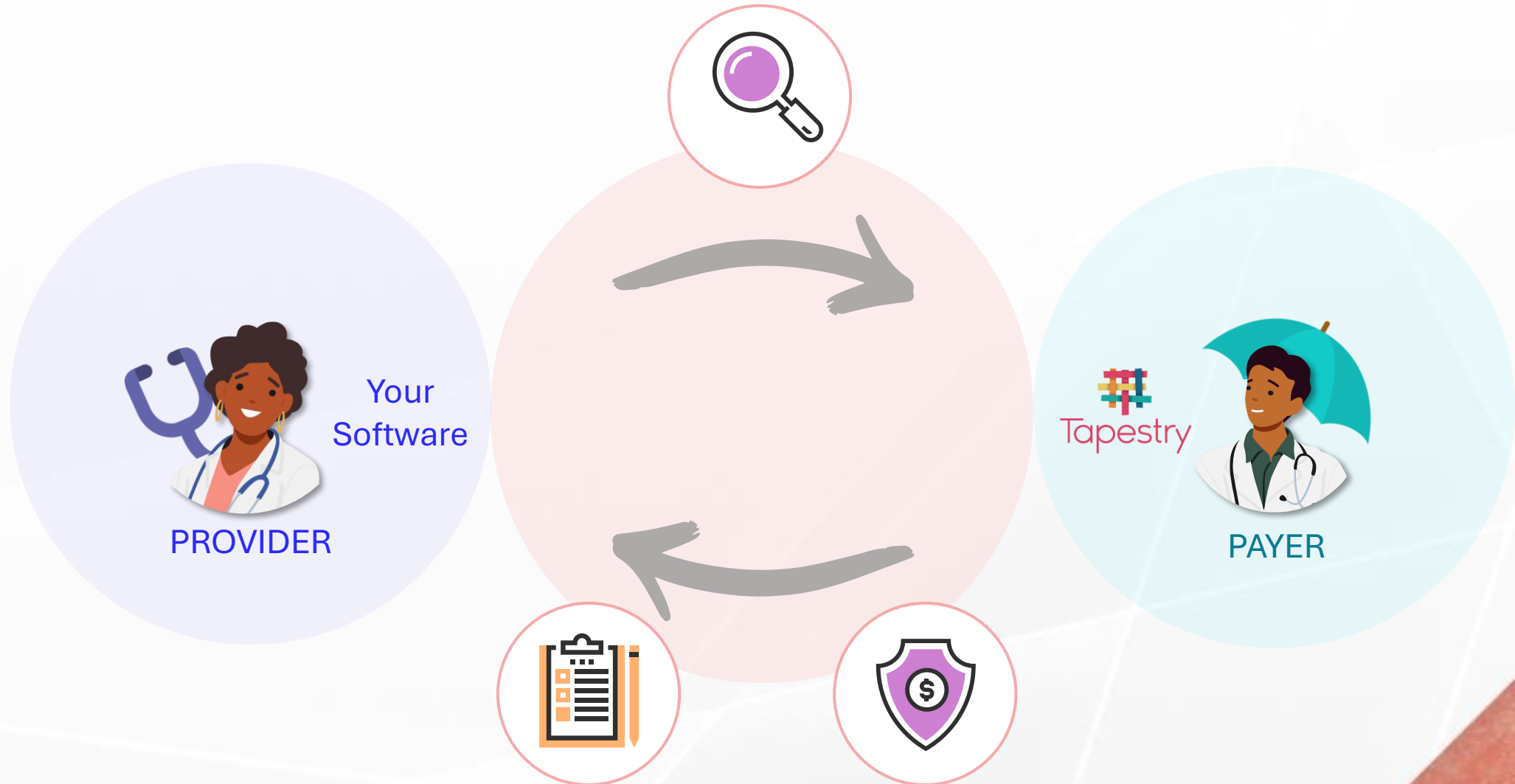
Timelines



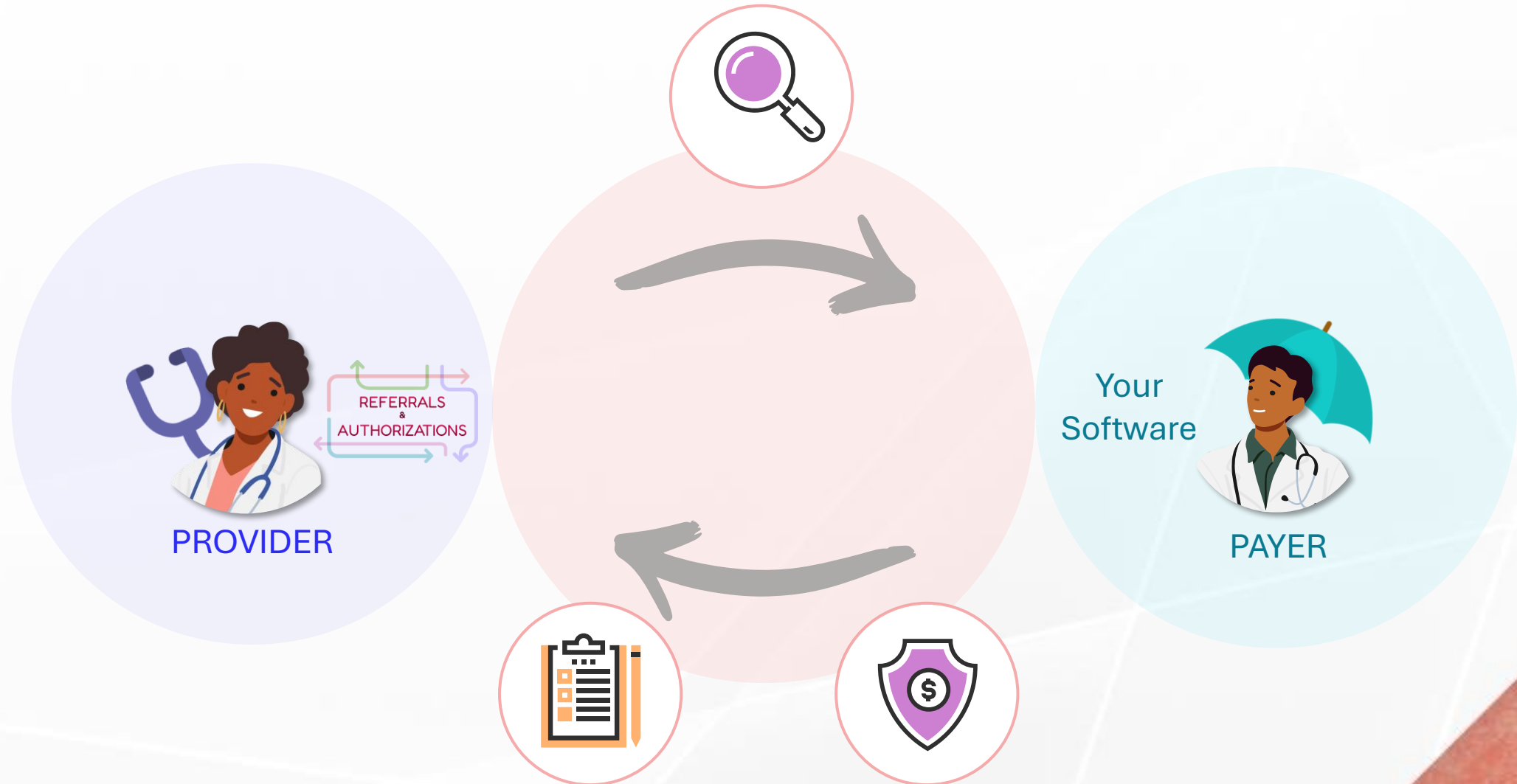
FEB 2026



Connections



Connections



Technical Overview

Da Vinci Burden Reduction



CRD

Coverage Requirements
Discovery



DTR

Documentation Templates
and Rules



PAS

Prior Authorization
Support

Da Vinci Burden Reduction

STU 2.0 was published January 2024

STU 2.1 is current, published December 2024

STU 2.2 is currently open for balloting

Da Vinci Burden Reduction

STU 2.0 was published January 2024

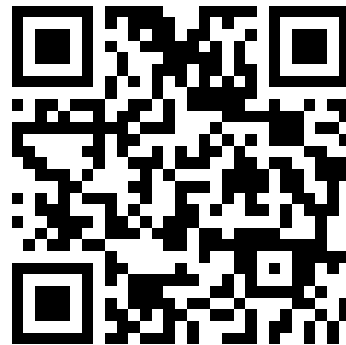
STU 2.1 is current, published December 2024

STU 2.2 is currently open for balloting

Involvement

Community Involvement

- Da Vinci implementer meetings open to public
- Project direction and success rely on implementer involvement
- We recommend paying attention to the standard and balloting periods



HL7 Conference
Calls Website

Involvement

Community Involvement

- Da Vinci implementer meetings open to public
- Project direction and success rely on implementer involvement
- We recommend paying attention to the standard and balloting periods



HL7 Conference
Calls Website

Epic's Involvement

- We're attending Connectathons and weekly calls
- Working with third parties
- Submitting suggestions and enhancements

100+
tickets submitted

Da Vinci Burden Reduction



CRD

Coverage Requirements
Discovery



DTR

Documentation Templates
and Rules



PAS

Prior Authorization
Support

Da Vinci Burden Reduction



CRD

Coverage Requirements
Discovery



HL7 CRD IG



DTR

Documentation Templates
and Rules



PAS

Prior Authorization
Support

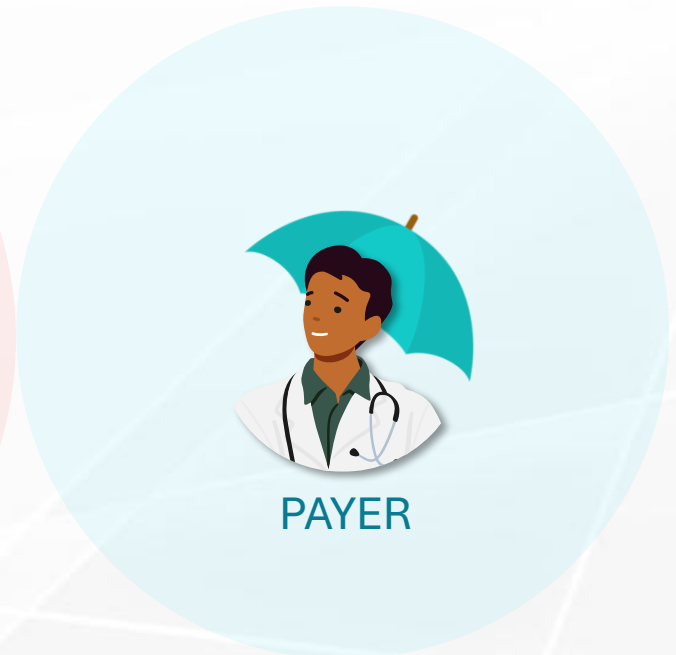
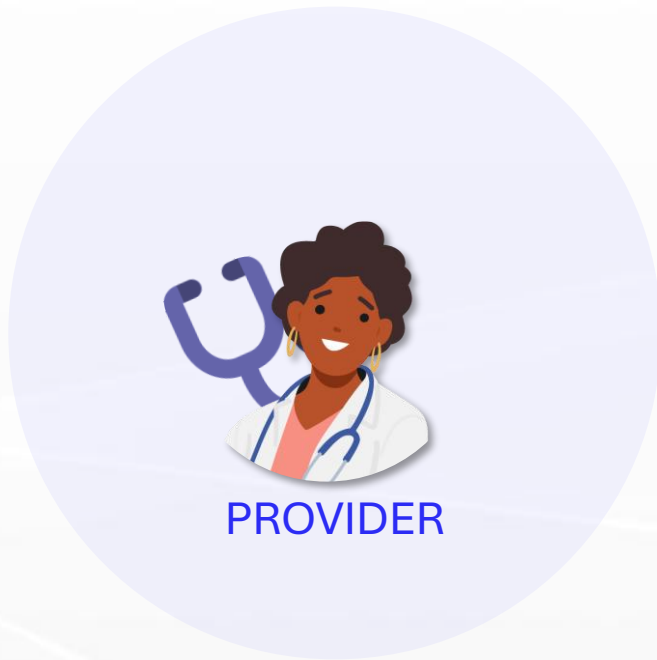
CRD

Clinical Decision Support Transactions



CRD

Reuse for CRD



CRD

Core Parts

Point of Care

Allows prior authorization information to be surfaced while the patient is present

Kick off Auth

Responses contain information that can drive next steps in the prior authorization process

CRD

Epic Specifics

1

Automatically run
CRD at order signing
and appointment
booking

2

Lenient on Timing
Requirements

3

Allow for ad-hoc use
of CRD by
administrative staff

Da Vinci Burden Reduction



CRD

Coverage Requirements
Discovery



DTR

Documentation Templates
and Rules



PAS

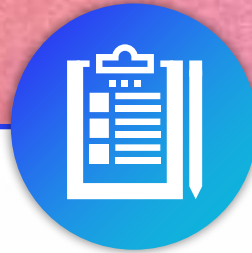
Prior Authorization
Support

Da Vinci Burden Reduction



CRD

Coverage Requirements
Discovery



DTR

Documentation Templates
and Rules



HL7 DTR IG



PAS

Prior Authorization
Support

DTR

Core Parts

Questionnaires

To capture discrete answers for transmission to the payer

Authoring Flexibility

Choose to send entire questionnaire or manage your own logic

User Experience

Clients can work with third-party SMART apps or host the UI natively

DTR

Epic Specifics

1

DTR hosted natively
within Epic's UI

2

Builds upon our
existing capabilities
of SMART
questionnaires

3

Epic AI tools help
providers populate
responses

Da Vinci Burden Reduction



CRD

Coverage Requirements
Discovery



DTR

Documentation Templates
and Rules



PAS

Prior Authorization
Support

Da Vinci Burden Reduction



CRD

Coverage Requirements
Discovery



DTR

Documentation Templates
and Rules



PAS

Prior Authorization
Support



PAS IG

PAS

Core Parts

Transaction

Encapsulates X12 data in a FHIR payload

Extendable

With additional FHIR resources
(e.g., DTR questionnaires)

Epic Specifics

1

Electronic auth can be initiated without user intervention

2

Support for submission, inquiry, and documents

3

Initially leveraging additional FHIR functionality for DTR

Key Takeaways

1

CRD, DTR, and PAS are a path to a better future with prior auth

2

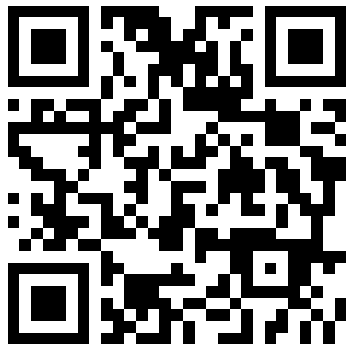
Epic will be compatible with the STU 2.1 version in February 2026

3

Connection testing available now

VendorServices@epic.com

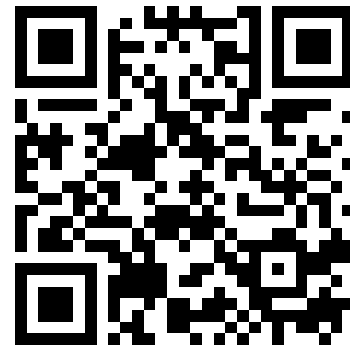
Wrap Up



HL7 Conference
Calls Website



CRD IG
(Current Release)



DTR IG
(Current Release)



PAS IG
(Current Release)

© 2025 Epic Systems Corporation. All rights reserved. Subject to [Terms of Use](#).

After Visit Summary, ASAP, Aura, Beacon, Beaker, Beans, BedTime, Best Care Choices for My Patient, Bones, Break-the-Glass, Buggy, Caboodle, Cadence, Canto, Care Everywhere, Charge Router, Cheers, Chronicles, Clarity, Cogito ergo sum, Cohort, Comfort, Community Connect, Compass Rose, Cosmos, Cosnome, Cupid, Discovery, Epic, EpicCare, EpicCare Link, Epicenter, EpicShare, EpicWeb, Epic Earth, Epic Nexus, Epic Research, Garden Plot, Grand Central, Haiku, Happy Together, Healthy Planet, Hello World, Hey Epic!, Hyperdrive, Hyperspace, Kaleidoscope, Kit, Limerick, Lucy, Lumens, MyChart, Nebula, OpTime, Phoenix, Powered by Epic, Prelude, Radar, Radiant, Resolute, Revenue Guardian, Rover, Share Everywhere, SmartForms, Sonnet, Stork, System Pulse, Tapestry, Trove, Welcome, Willow, Wisdom, With the Patient at Heart, and WorldWise are registered trademarks, trademarks, or service marks of Epic Systems Corporation in the United States of America and/or other countries. Other company, product, and service names referenced herein may be trademarks or service marks of their respective owners.

Patents Notice: www.epic.com/patents.